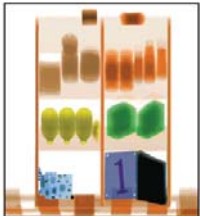


TSA QUALIFIED

XIS-6040

Flexible System Design

Checkpoint Security:
Small Baggage and Parcel Inspection



6 Colour Imaging



Real-Time Diagnostics



The XIS-6040 X-Ray Inspection System features a tunnel opening of 60.0 x 40.0 cm (23.6" x 15.7"). The XIS-6040 offers a compact design with increased dimensions to enable a wider range of placement and screening of more diverse objects.

The XIS-6040 has found placement at hotels, prisons, government sites, and transportation hubs. With its small frame, the XIS-6040 maintains high mobility, but with a wider tunnel size for varied application. With a powerful 160 kV generator, the XIS-6040 provides crisp, high resolution images due to its advanced software and superior processing technology.

Totalpost has the fastest delivery times. We offer immediate screening solutions with unparalleled order flexibility and customization. Totalpost are exclusive UK & Ireland distributors for Astrophysics Inc.

All XIS Systems are equipped with Real-Time Diagnostics, a unique Astrophysics feature which allows users to monitor their machine health, thus greatly increasing the system lifespan.

An exclusive Astrophysics standard feature, 6 Colour Imaging enables operators to view screened objects in 6 colours, with each colour correlating to a specific range of Atomic Z-Numbers. 6 Colour Imaging enables operators to achieve optimal material identification and improve throughput with more effective screening technology.

The XIS Series features top-of-the-line software and hardware technology establishing Astrophysics as the leader in innovation and quality.

Totalpost provide national coverage with our team of fully trained and experienced engineers we can deliver excellent maintenance across the country and depending on need, we can give rapid response within 2 hours together with arranging 24/7 video surveillance for threat protection advice

General Specifications

- Tunnel Size: 60.0 cm x 40.0 cm
(W x H) 23.6" x 15.7"
- Dimensions: 207.1 cm x 84.9 cm x 125.5 cm
(L x W x H) 55.9" x 33.4" x 49.4"
- Shipping Dimensions: 229.1 cm x 96.5 cm x 154.9 cm
(L x W x H) 60.0" x 38.0" x 61.0"
- Net Weight²: 460 kg (856 lbs)
- Shipping Weight²: 560 kg (1076 lbs)
- Conveyor Speed: 23 cm/s (44 ft/min) Forward or Reverse
- Conveyor Height: 72.5 cm (28.5") from Floor
- Conveyor Capacity: 165 kg (364 lbs) Evenly Distributed Load
- Construction: Custom Steel Frame / Panels

Technical

- Sensitivity: 40 AWG Typical, 38 AWG Standard
- Spatial Resolution: 1.0 mm Horizontal, 1.0 mm Vertical
- Steel Penetration¹: 39 mm Typical, 37 mm Standard
- Contrast Sensitivity: 24 Visible Levels, 4096 Gray Level

X-Ray Generator

- Voltage: 160 kV Operating at 150 kV
- Tube Current: 0.7 mA
- Cooling: Sealed Di-Electric Oil Bath with Forced Air
- Duty Cycle: 100%, No Warm-Up Procedure Required
- Beam Direction: Diagonally Upward
- Detector: 1152 Channels in an L-Shaped Array

Computer

- Processor: Intel Core2 Quad, 2.66 Ghz, 1333 MHz
- Memory: 2 GB RAM at 1333 MHz
- Storage: 250 GB HDD
- Video Card: 256 MB Video Card, Dual Digital Display
- Platform: Windows XP Pro
- Backup: Uninterrupted Power Supply (20 min)

Video

- Display Type: Single 19" LCD Color Monitors
- Display Resolution: 1280 x 1024; 24 bit/pixel Color

Environmental

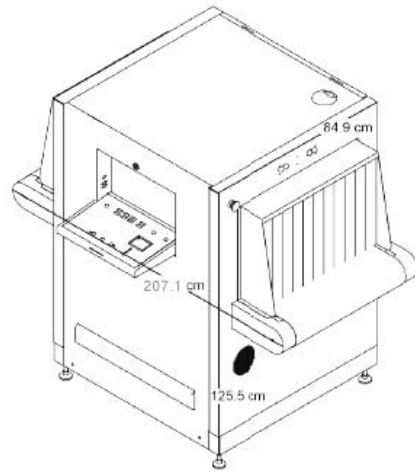
- Operating Temperature: 0°C - 40°C \ 32°F - 104°F
- Storage Temperature: -20°C - 60°C \ -4°F - 140°F
- Humidity: Up to 95% Non-Condensing

Electrical

- Power Requirements: 110VAC: 96-132 VAC, 60 HZ. 15 Amp Max
220VAC: 183-253 VAC, 50 HZ. 10 Amp Max

Health and Safety

- Compliant with USFDA, Center for Devices and Radiation Health Standards for Cabinet X-Ray Systems (21-CFR 1020.40).
- Typical Radiation leakage is less than 0.1 mR/hr (Leakage less than 0.5 mR/hr permitted by the Federal Standard).



Standard Features

- 6 Color Imaging
- 9 Quadrant Zoom
- Atomic Z-Number Measurement
- Auto Image Archiving (50,000 Images)
- Baggage Counter
- Color and Black / White Imaging
- Continuous Scanning
- Continuous Zoom 2x to 32x
- Density Alert
- Edge-Enhancement Imaging
- Geometric Image Distortion Correction
- High Penetration Function
- Heavy Duty Roller Casters
- Image Annotation
- Image Review (100 Images)
- Manual Bitmap Archive
- Material Discrimination
- Multi-Tier Accessibility
- Network Ready
- Organic/Inorganic Imaging
- Operator Training Program
- Picture Perfect
- Print Image Capable
- Pseudo Color
- Real-Time Image Manipulation
- Real-Time Self Diagnostics
- Reverse Monochrome
- Vertical Zoom Panning

Optional Features³

- 24" LCD Monitors
- ASTM 10 Stepwedge/ASTM F0792-01E2 Test Case
- Climate Variable Operating Kit
- Custom Paint
- Entry / Exit Roller Tables, 0.5 m increment
- Extended Image Archiving (100,000 Images)
- Footmat Operator Interlock
- Heavy Duty Rubber Casters
- Local Language Support (Arabic, Chinese, French, Spanish, and more)
- Radiation Meter
- Remote Configuration
- Screener Assist Threat Detection Software
- Supervisor Workstation
- Suspect Search Station
- Threat Image Projection Software



Totalpost Services Plc
1 Skelgillside
Alston
Cumbria CA9 3TR
United Kingdom

t +44 (0) 845 4900360
f +44 (0) 845 4900361
e sales@totalpost.com

www.totalpost.com



Approved suppliers and maintainers of franking machines.
TOTALPOST operates an ISO 9001 :2008 certified management system.